

Art Happenings with Kailua Village Artists

A Local Gallery Co-op since 1987



KAILUA VILLAGE ARTISTS FEATURED ARTIST IN MAY IS JEWELRY ARTIST, GIGI GOOCHEY

All of Gigi Goochey's jewelry is handmade by her on the island of Hawaii. She uses sterling silver and gold in all her jewelry pieces, and incorporates gemstones, as well as shells and coral, that are found here locally by the artist.

Gigi has lived in Captain Cook for 27 years with her husband and two sons, who were born and raised on the island. Jewelry art has been her way of expressing her passion for the beauty around her, including the influence of the ocean, where she spends much of her time. She started her jewelry business "Designs by Giglia" in 2000. The designing of new pieces is Gigi's favorite part, figuring out the process, the jewelry components for each piece and the possibilities. It is truly therapy through art.

Gigi is a lecturer in Anatomy/Physiology at the Hawaii Community College Palamanui Campus. She holds a MS in Exercise Physiology. Currently, she also started teaching Medical Services Pathway at Kealakehe High School to inspire students to get involved in the healthcare field.

Meet and talk story with the artist when she will be working at the Kailua Village Artists Gallery on Thursday, May 10, and on Monday, May 28, 2018.

**Lolite Cage Necklace
Sterling Silver**

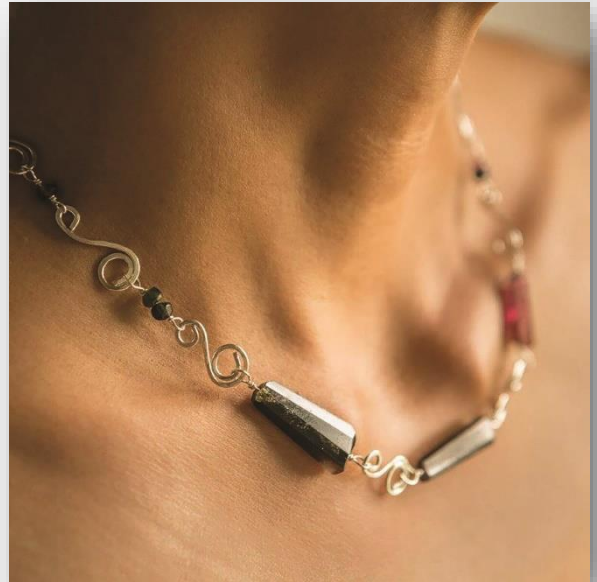


More of Gigi's Jewelry

Jeremy & Square Carnelian Bangle



Jeremy & Tourmaline Sterling Silver Choker



Gem & Wire Earrings



Turquoise & Pearl Earrings



KAILUA VILLAGE ARTISTS TEN MEMBER ARTISTS

Kathleen Carr
Photography



Stefanie Culbertson
Watercolors, Digital Design



Betty Gerstner
Hand Painted Porcelain, Watercolors,
Silk Painting



Gigi Goochey
Jewelry



Bill Jaeger
Stained Glass



Kathleen Jaeger
Mosaics, Acrylics



Leslie Munger
Chain Maille Jewelry



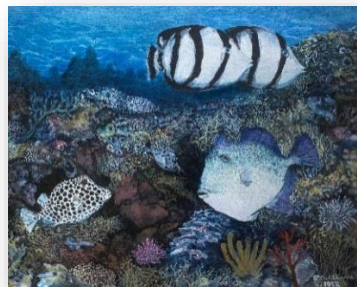
Christal Nylin
Oils



Linda Savell
Ceramics, Jewelry



Robert (Bob) S. Williams
Acrylic on Paper and Canvas



New Artist: Pat Hedden, Palette Knife Artist, will be joining Kailua Village Artists soon!

KAILUA VILLAGE ARTISTS GUEST ARTISTS

(Artists' work shown below, from top left horizontally across)



Bill Twibell – Gyotaku
Hugh Jenkins & Stephanie Ross – Glass Blowers
Parker and Debbie Nicholson – Wood Turners
Whitney Steele – Photography
Brad Lewis – Photography
Rachel Baker – Fused Glass
Frank Andrews - Welded Copper
Tom Carey – Wood Turner (no photo)



The Kailua Village Artists Gallery features an eclectic display of reasonably priced original artworks, including paintings in acrylic, mixed media, oil, pastel, photography and watercolor. Fine art prints of the originals are available. The gallery hosts a distinguished display of 3-D art in ceramics, glassware, jewelry, mosaics, porcelain, stained glass and wood work.

The Kailua Village Artists Gallery is a Cooperative organization. The gallery is managed by its members. We are located at 75-5729 Alii Drive, Suite C-110 in the Kona Marketplace, up the blue walkway just North of Kakina Lane. The gallery is open every day from 9:30am – 5:30 pm, for more information please call (808) 329-6653.

Kailua Village Artists Gallery has a booth at the **KOKUA KAILUA VILLAGE STROLL ON ALII DRIVE**. Third Sunday of each month, from 1 – 6 pm



Find us on FACEBOOK
KAILUA VILLAGE ARTISTS
Kailua Village Artists E-mail:
kailuavillageartists@gmail.com
kailuavillageartists@yahoo.com