

Art Happenings with Kailua Village Artists

A Local Gallery Co-op since 1987



KAILUA VILLAGE ARTISTS FEATURED ARTIST IN APRIL IS STEFANIE CULBERTSON

Stefanie, a watercolor painter and digital designer, has been painting with watercolors since she first moved to Hawaii in 1989 from the 'Old World' Germany. Her fascination with the lush beauty of this island still inspires her art, and she has grown deep roots here. She earned her AA degrees in Liberal Arts and Drama and her BA in Digital Design. Immediately after graduating in 2006, Stefanie started her own business, Tiffany Arts Designs. Painting and selling her art, she worked on commissions and creating digital designs.

Among the new paintings Stefanie will be featuring is the "Tree of Life." The painting was inspired by the cycle of the life force sustaining us all. The process of photosynthesis of trees and plants is a fragile and necessary balance that interconnects us all. We depend on each other for life to exist on Earth. The bright yellow on the branches and lines running within the trunk of the tree, along with the red, blue and green, are the energy absorbed from the sun and our

exhalations. It penetrates through to the depth of the roots, deeply grounded in the earth, in return releasing life giving energy and oxygen to all breathing and living beings. The blue and green leaves are delicate, maintaining the balance of photosynthesis. The painting portrays unity, tranquility and the strength of the tree. It is home to the visible and invisible worlds. The fairy creatures are a part of an invisible, imaginative world. The vines hanging off the tree branches are symbolic of the thin veil between what we see and what we perceive, the hidden realms in the world.

To meet the artist and learn more about her latest works, Stefanie will be working at the gallery on Saturday, April 6 and 20, 2019. To see more of Stefanie's work, check out her website: tiffanyartsdesigns.com.

Stefanie Painting at Hooulu Market

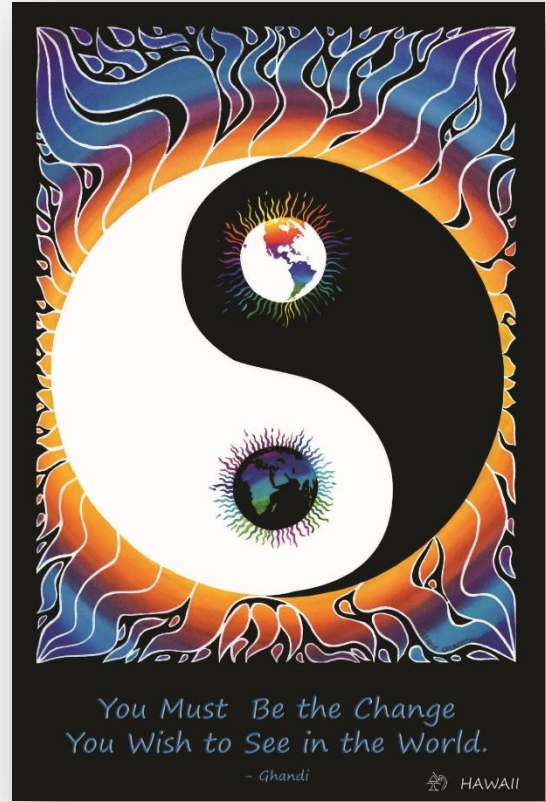


Stefanie's Art

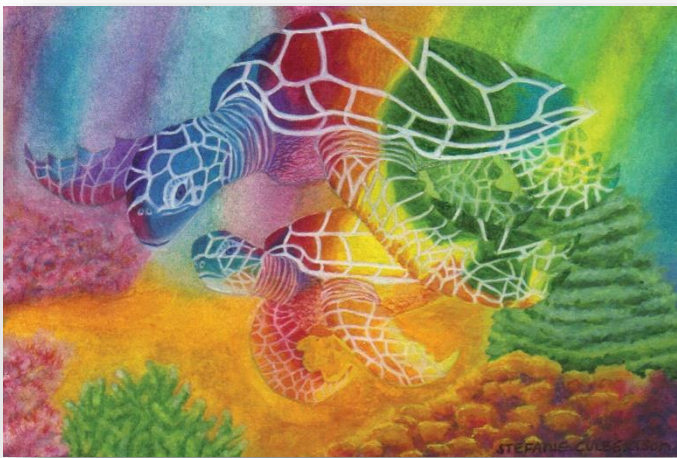
Tree of Life



Yin Yang Earth



Anuenue Honu Twins



Motherhood Anuenue Humpback and Calf



KAILUA VILLAGE ARTISTS TEN MEMBER ARTISTS

Jennifer Azzarone
Image Transfer



Thomas Carey
Photography, Wood Turner



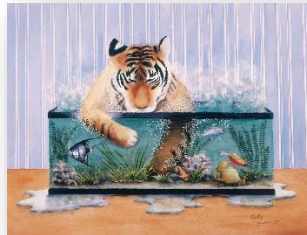
Kathleen Carr
Photography



Stefanie Culbertson
Watercolors, Digital Design



Betty Gerstner
Hand Painted Porcelain,
Watercolors, Silk Painting



Pat Hedden
Palette Knife Artist (Oil)



Bill Jaeger
Stained Glass



Kathleen Jaeger
Mosaics, Acrylics, Pen & Ink



Christal Nylin
Oils



Linda Savell
Ceramics, Jewelry



KAILUA VILLAGE ARTISTS GUEST ARTISTS

(Artists' work shown below, from top left horizontally across)



Frank Andrews - Welded Copper

Scott Pincus – Silver Jewelry

Bill Twibell – Gyotaku (fish prints)

Brad Lewis – Photography

Rachel Baker – Fused Glass



The Kailua Village Artists Gallery

features an eclectic display of reasonably priced original artworks, including paintings in acrylic, mixed media, oil, pastel, photography and watercolor. Fine art prints of the originals are available. The gallery hosts a distinguished display of 3-D art in ceramics, glassware, jewelry, mosaics, porcelain, stained glass and wood work.

The Kailua Village Artists Gallery is a Cooperative organization. The gallery is managed by its members. We are located at 75-5729 Alii Drive, Suite C-110 in the Kona Marketplace, up the blue walkway just North of Kakina Lane. The gallery is open every day from 9:30am – 5:30 pm. For more information please call (808) 329-6653.

Kailua Village Artists Gallery has a booth at the **KOKUA KAILUA VILLAGE STROLL ON ALII DRIVE**. Third Sunday of each month, from 1 – 6 pm



Find us on FACEBOOK
KAILUA VILLAGE ARTISTS
Kailua Village Artists E-mail:
kailuavillageartists@gmail.com
kailuavillageartists@yahoo.com