

## Art Happenings with Kailua Village Artists

A Local Gallery Co-op since 1987



### KAILUA VILLAGE ARTISTS FEATURED ARTIST IN APRIL IS LINDA SAVELL

Below is information about the methods used to create some of Linda's works of art:

#### Raku and alternative Raku

Western Raku is glazed, but many of its alternative forms are not.

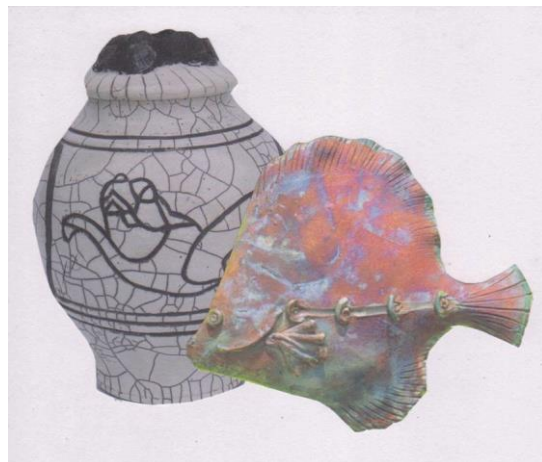
Pit firing is the original method of "baking clay." It dates back nearly 30,000 years. This method is typically done in a hole, pit in the ground. The pots are placed in sawdust, chemicals, layers of wood and paper that are stacked above the pottery. These are the fuels. Pit fired ware seems to be created by nature itself. The artist uses numerous organic materials to create a myriad of patterns and colors. Each piece that is created from the ashes is totally unique.

Horsehair fired pieces use carbonaceous materials, horsehair, to create the designs. Other materials and stains are used for additional color. Both processes are applied to ware that has been burnished. The potter uses smooth rocks, spoons and other ultra smooth objects and PATIENCE to compress the clay thus creating a glossy surface. Linda has a display of raku and stoneware tropical fish in the Kailua Village Artists Gallery. Although the raku fired fish can only be displayed out of direct sunlight, the stoneware fish can be hung outside, in direct sunlight.

A native of Michigan, with a master's degree in Ceramic Technology and Education, Linda relocated to Hawaii Island in 1997 and continues to explore new avenues of creativity in her South Kona studio. Kailua Village Artists Gallery also exhibits Linda's functional creations such as tea pots, coffee and tea cups, serving platters and decorative vases as well as her jewelry items. She fashions necklaces, pendants and earrings, using dichroic glass shapes and often incorporates ceramic forms.

Meet and talk story with the artist when she will be working at the Kailua Village Artists Gallery on Wednesday, April 5<sup>th</sup>

Vase and Raku Fish



## More of Linda's Ceramic Art

Three Humu Fish



Bronze Urn



Lidded White Raku Box



Covered Raku Bowl



# KAILUA VILLAGE ARTISTS TEN MEMBER ARTISTS

**Kathleen Carr**  
Photography



**Stefanie Culbertson**  
Watercolors, Digital Design



**Betty Gerstner**  
Hand Painted Porcelain, Watercolors,  
Silk Painting



**Gigi Goochey**  
Jewelry



**Bill Jaeger**  
Stained Glass



**Kathleen Jaeger**  
Mosaics, Acrylics



**Leslie Munger**  
Chain Maille Jewelry



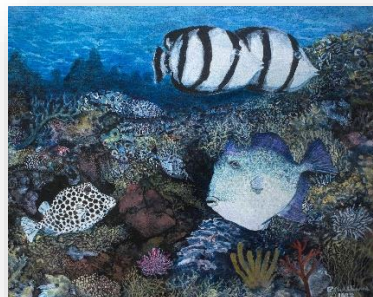
**Christal Nylin**  
Oils



**Linda Savell**  
Ceramics, Jewelry



**Robert (Bob) S. Williams**  
Acrylic on Paper and Canvas



## KAILUA VILLAGE ARTISTS GUEST ARTISTS

(Artists' work shown below, from top left horizontally across)



**Bill Twibell – Gyotaku**  
**Hugh Jenkins & Stephanie Ross – Glass Blowers**  
**Parker and Debbie Nicholson – Wood Turners**  
**Whitney Steele – Photography**  
**Brad Lewis – Photography**  
**Rachel Baker – Fused Glass**  
**Frank Andrews - Welded Copper**  
**Tom Carey – Wood Turner (no photo)**



**The Kailua Village Artists Gallery** features an eclectic display of reasonably priced original artworks, including paintings in acrylic, mixed media, oil, pastel, photography and watercolor. Fine art prints of the originals are available. The gallery hosts a distinguished display of 3-D art in ceramics, glassware, jewelry, mosaics, porcelain, stained glass and wood work.

The Kailua Village Artists Gallery is a Cooperative organization. The gallery is managed by its members. We are located at 75-5729 Alii Drive, Suite C-110 in the Kona Marketplace, up the blue walkway just North of Kakina Lane. The gallery is open every day from 9:30am – 5:30 pm, for more information please call (808) 329-6653.

Kailua Village Artists Gallery has a booth at the **KOKUA KAILUA VILLAGE STROLL ON ALII DRIVE**. Third Sunday of each month, from 1 – 6 pm



Find us on FACEBOOK  
**KAILUA VILLAGE ARTISTS**  
Kailua Village Artists E-mail:  
kailuavillageartists@gmail.com  
kailuavillageartists@yahoo.com